



MDE-LIO Newsletter

September 2017



Low Incidence Outreach
702 W. Kalamazoo St.
PO Box 30742
Lansing, MI 48909

Table of Contents



01 Greetings

- Welcome Back
- APH News and Highlights



02 IMC Update

- Submit Requests Early
- Loan Library: New Titles



03 Braille Workshops

- Paths to Literacy Newsletter
- New I-M-ABLE Workshop



04 DHH Events

- Resources for Transition
- The Kendall Conversational Proficiency Levels (P-Levels) Workshop in Lansing
- EIPA Video Conference Series



05 Orientation & Mobility Tip



06 Camp Tuhsmebeta (Camp T)

- Outdoor Education Workshops



07 Save the Date

- Backpacking Basics Workshop
- Advanced Backpacking Workshop



08 Family Nature Club

- Harvest and Pumpkins
- Winter Snowshoeing
- The Great Backyard Bird Count
- Spring Equinox
- Family Backpacking Weekend
- Family Paddling Event



09 ILS Tip

New Technology Workshops

- The Benefits of Using APH Products for Students With Visual Impairments
- How to Give an Effective Technology Evaluation to Students With Visual Impairments: A Workshop for Teachers
- Increase Students' Productivity Using Google Products



10 Technology Workshop Schedule

- BrailleSense Polaris Training
- Microsoft Word 2010 Using JAWS
- BrailleNote Touch Workshop
- Using Brailiant BI Refreshable Braille Display in the Classroom with the iPad and PC
- Creating Braille in the Classroom with the Mountbatten Learning System
- Teaching Excel 2010 Using JAWS
- BrailleNote Apex Fundamentals

Welcome Back!



I hope your year has started out with students engaged and ready to learn. What a privilege it is to be able to teach children in Michigan! I know they are all lucky to have you as teachers and mentors.

Thank you!

Collette Bauman
Supervisor, MDE-LIO
APH Ex-Officio Trustee

APH News and Highlights

There are many exciting and new products available at American Printing House for the Blind (APH). Use your quota funds allocated for eligible students to assist with teaching educational content and skills to your students who are Blind/Visually Impaired (BVI). Browse the APH website (aph.org) to find new products.

This year's allocation per eligible student is \$279.10. The total number of students reported on the annual Federal Quota Program for Michigan was 1,800. These funds are available through the Act to Promote the Education of the Blind of 1879 to provide adapted educational materials. APH works in collaboration with the federal government to help these students achieve in the classroom and succeed in the workplace. Read the APH Overview of Federal Quota (aph.org/federal-quota).

If you have products you no longer need, please return them to MDE-LIO so they are available for others to borrow. The loan program through MDE-LIO ensures the maximum utilization of the products and funds.



What's New at APH?

New at APH is an educational smart tablet magnifier for the connected student! The MATT Connect™ is a magnifier, distance viewer, and an educational tablet with pre-loaded software — all in one device.

Students can magnify a print document, read a book from an online library, conduct internet research, view a distant or connected smartboard in a classroom, write and email assignments, take a test, and so much more!

This product is recommended for students who are in middle or high school.

IMC Update

Over the summer, IMC staff has worked diligently to ensure we are ready for teachers returning to class. This year, our braille production has hit an all-time high; we have processed more than 600 titles, all of which are either Unified English Braille (UEB) or UEB with encapsulated Nemeth Code transcriptions.

Be sure to keep an eye on our KLAS Catalog. We are constantly updating the system with new titles, and some amazing books are available under the new braille code. This year, in math and science alone, we added titles ranging from chemistry and AP physics to statistics and precalculus.

www.webopac.klas.com/mdelio

Submit Requests Early

MDE-LIO has access to money-saving opportunities for original transcriptions, which can otherwise be expensive. Make sure to submit your book or material request early in the school year, and the IMC will track down the most cost-effective option. Many texts can take six to eight months to transcribe, so keep in mind any books your students may need for the 2018–2019 school year.

We are here to help!

Please don't hesitate to seek assistance. For more information contact:

Robert Beaton
Braille Production Coordinator
Email: beatonr@michigan.gov
Phone: 517-377-2107



Loan Library: New Titles

Thanks to the record number of requests from educators around the state, the loan library has begun clearing off shelves to make room for new titles and texts in the new braille code. Don't hesitate to use our book search process as your first stop when looking for a book. We can pull and ship books within 24 to 48 hours in most instances.

Braille Workshops

Paths to Literacy Newsletter

Do you have a new braille reader on your caseload this year? Need a few more ideas for your current braille readers? Sign up to receive the Paths to Literacy newsletter. This resource, sent via email once a week, is filled with ideas for working with your students. Topics, which are centered around literacy, include auditory strategies, braille, cortical visual impairment (CVI), and dual media, to name just a few. Use the link below to register for an account!

Paths to Literacy Registration: pathstoliteracy.org/user/register



The I-M-ABLE Workshop

Don't miss an opportunity to spend the day with Diane Wormsley as she presents the Individualized Meaning-Centered Approach to Braille Literacy Education (I-M-ABLE) for children with visual impairments and additional cognitive disabilities.

Participants will learn to:

- Identify with principles upon which I-M-ABLE is based
- Create materials for use with I-M-ABLE
- Adapt the various components of I-M-ABLE into a literacy program

“Spots are limited, so sign up today!”

I-M-ABLE Workshop Details and Registration:

www.mdelio.org/blind-visually-impaired/events/i-m-able-workshop

DHH Events



The Kendall Conversational Proficiency Levels (P-Levels) Workshop in Lansing

October 13, 2017

In this workshop, school professionals will learn how to use the P-Levels to assess the communicative competence of their students, ages birth through adolescence. The P-Levels are applicable for students who use American Sign Language as well as for students who use listening and spoken language.

EIPA Video Conference Series

Starting October 7, 2017

MDE-LIO will once again sponsor Boys Town National Research Hospital's annual EIPA Video Conference series for educational interpreters in Michigan. Eight host sites will present four live-stream conferences at their locations. Educational interpreters can earn .4 MI BEI/EIPA CEUs at each conference.

Sign up and learn more:

www.mdelio.org/deaf-hard-of-hearing/events

Resources for Transition

For students who are Deaf, DeafBlind, or Hard of Hearing, a successful transition to postsecondary life requires planning and effort. Many online resources are available to assist students, parents, and IEP team members in supporting students with transition. Several good resources are included below.

[National Deaf Center \(NDC\) on Postsecondary Outcomes](http://nationaldeafcenter.org)
(nationaldeafcenter.org)

Under "Get Resources" on the NDC website, users can find current research and data as well as a searchable library of resources. An additional resource, NDC/Explore, will launch this fall for students, parents, and professionals. Information about NDC/Explore can be found under "Take a Class" on the NDC site.

[National Center on Deaf-Blindness \(NCDB\)](http://nationaldb.org)
(nationaldb.org)

The NCDB offers resources specifically for families as well as an electronic library of information on selected topics, such as the Transition Toolkit (documents.nationaldb.org/transitiontoolkit/TransitionToolkit_Final.pdf).

[Michigan Transition, operated by the Michigan Department of Education, Office of Special Education \(MDE, OSE\)](http://mitransition.org)
(mitransition.org)

The Michigan Transition website (formerly known as MI-TOP) provides an archive of presentations and guidance materials, a transition coordinator directory, and more.



Orientation & Mobility Tip

Have you had an opportunity to check out any orientation and mobility blogs recently? As the new school year begins, here are a few sites offering tips, ideas, do-it-yourself games, and suggested activities you may find interesting and useful.

Cane and Compass (caneandcompass.com)

Categories include basic skills, book recommendations, cooking, daily living skills, general O&M concepts, low vision, social, tactile, and more.

VisionAware (bit.ly/2wxPk4q)

VisionAware's O&M blog posts cover personal perspectives and responses to vision loss, daily living techniques and helpful products, breaking news on eye conditions and treatments, new resources and organizations, and more.

FamilyConnect (familyconnect.org/blog.aspx)

FamilyConnect hosts a variety of blog posts written by parents of children who are blind or visually impaired.

Fashioneyesta (fashioneyesta.com)

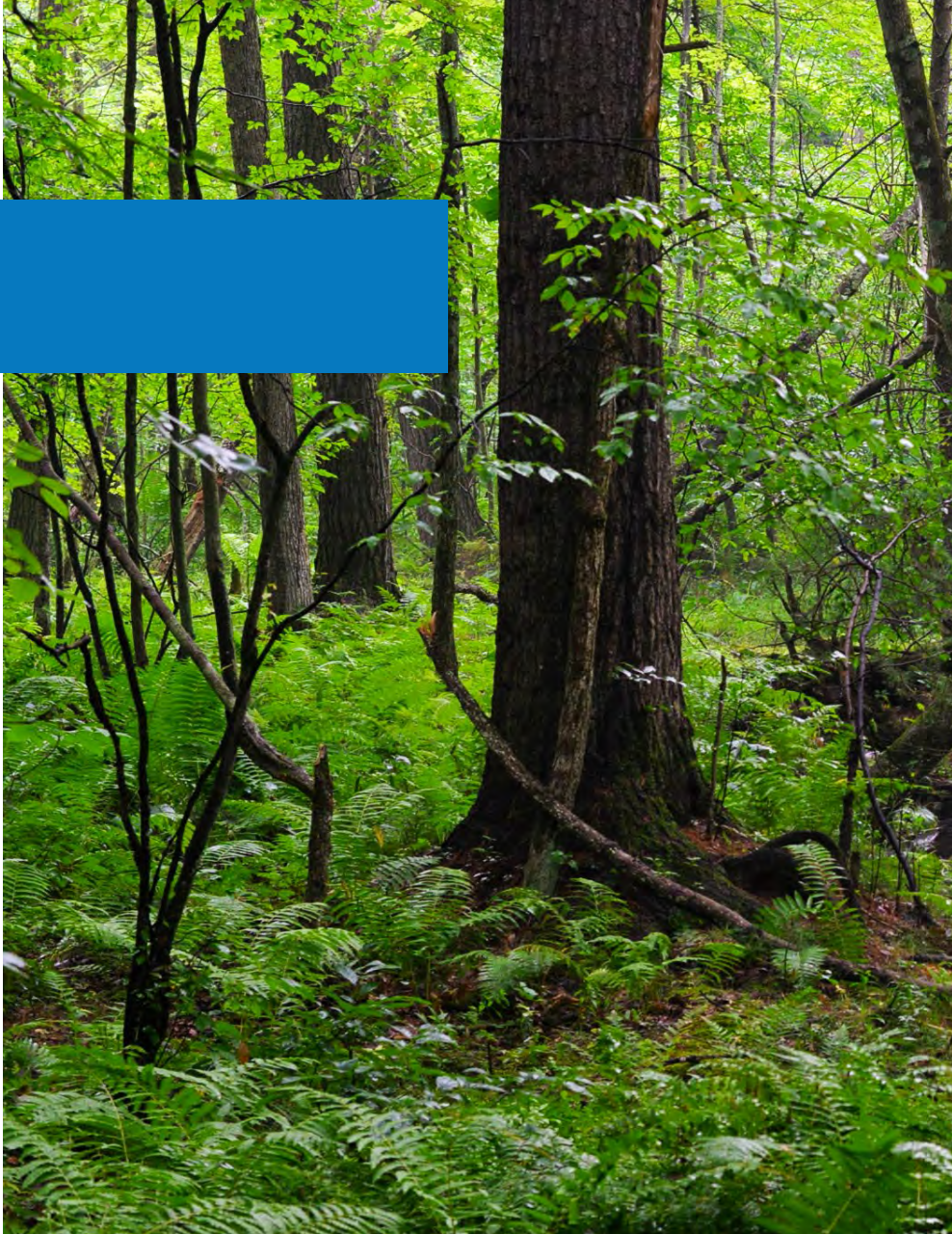
Fashioneyesta is a blog written by Emily Davison, who was diagnosed with septo-optic dysplasia, about fashion, beauty, lifestyle, and living with a disability.

Other resources:

- Sensory Travel O&M blog posts (bit.ly/2wErCTx)
- South Pacific Educators in Vision Impairment O&M resources (bit.ly/2xsaCNn)



Camp T



Outdoor Education Workshops

Camp Tuhsmeheeta's (Camp T) Outdoor Education Workshops aim to increase health and wellness in students who are Blind/Visually Impaired. These workshops give students opportunities to explore new activities and discover potential lifelong interests. This past summer, Camp T offered two Outdoor Education Workshops.

The first workshop, designed for middle-school students, focused on personal confidence. The program featured challenging activities designed to push students out of their comfort zones; rock-climbing, lake swim challenges, "swamped" canoe relays, and other activities provided a challenge for students while also building their strength and resiliency.

The second workshop, designed for high-school students, focused on backpacking and backcountry travel skills. The workshop gave students an opportunity to travel in the backcountry with only essential clothing, food, shelter, and supplies, and spend two nights in the wilderness as a group. The students learned how to pack an external frame backpack, organize supplies, set up shelter, and utilize other backpacking skills.



Photos taken at the Outdoor Education Backpacking Workshop at Camp T



Save the date for upcoming Outdoor Education Workshops!

Backpacking Basics Workshop

Location: Camp T

Date: June 18–21, 2018

This workshop is for middle-school and high-school students. We will provide an overview of the basics of backpacking and backcountry travel. All equipment and gear will be provided.

Sign up for Camp T Events at:

www.mdelio.org/blind-visually-impaired/events

Advanced Backpacking Workshop

Location: Camp T

Date: August 13-17, 2018

This is a workshop for students who have completed the Backpacking Basics Workshop. The workshop will include a trip to South Manitou Island, located in Northern Lake Michigan near the Leelanau Peninsula.

Participant registration will be limited due to the nature of the backpacking program.

Make sure to sign up as soon as registration is available!



Family Nature Club

The Camp T Family Nature Club is a group of people who are Blind/Visually Impaired (BVI) and their families who love to get outside and enjoy nature. The group typically meets on the third weekend of each month at Camp T. Previous Family Nature Club events included hiking, fishing, gardening, rock climbing, canoeing, dragon-boating, swimming, and socializing.

All individuals who are BVI and their families are welcome to attend! Food and lodging are available.

Save the date for upcoming Family Nature Club Events:

Harvest and Pumpkins

Location: Camp T
Date: October 20–22, 2017

Winter Snowshoeing

Location: Camp T
Date: January 20, 2018

The Great Backyard Bird Count

Location: Camp T
Date: February 16–18, 2018

Spring Equinox

Location: Camp T
Date: March 16–18, 2018

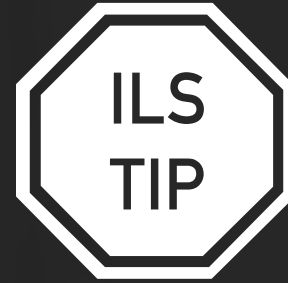
Family Backpacking Weekend

Location: TBD
Date: April 20–22, 2018

Family Paddling Event

Location: TBD
Date: May 18–20, 2018





Confidence in the kitchen is important for all students. It can be especially challenging for students who are non-readers or beginning readers. Paths to Literacy and American Printing House for the Blind (APH) offer great resources for helping students develop independent cooking skills.

Paths to Literacy: Visual Recipes for Non-Readers (pathstoliteracy.org/strategies/visual-recipes-non-readers)

APH Product: Making Picture Recipes Kit (bit.ly/2voXJHm)

New Technology Workshops

LIO's technology team is in the process of creating new hands-on regional technology workshops to add to its current series:

The Benefits of Using APH Products for Students with Visual Impairments

There are many fabulous and exciting American Printing House for the Blind (APH) products that can be used to enhance students' learning and productivity in the classroom. This workshop will demonstrate how students can benefit by using APH products in their educational setting, community, and home.

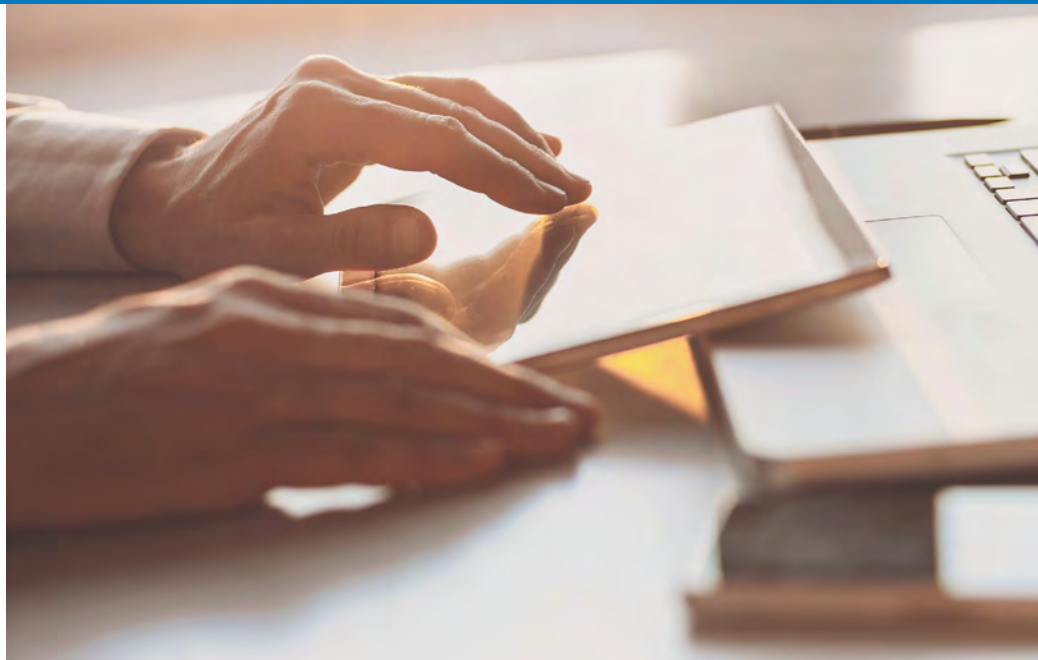
How to Give an Effective Technology Evaluation to Students with Visual Impairments: A Workshop for Teachers

This workshop will be designed to provide teachers with strategies, techniques, and resources to perform assistive technology assessments.

Increase Students' Productivity Using Google Products

This workshop will focus on how to use JAWS and VoiceOver effectively with Google programs, including Google Drive, Classroom, Docs, Sheets, Slides, etc.

Technology Workshops Schedule



BrailleSense Polaris Training

Location: [Michigan Library and Historical Center, Lansing](#)

Date: [October 5 and 6, 2017](#)

This workshop will explore native applications familiar to BrailleSense users, such as the word processor, address manager, scheduler, and greatly simplified methods of Nemeth and UEB math entry, while also unleashing the power of Android (Google Play Store, Google Docs, etc.).

This workshop is for beginners and those who may already have some experience with the device.

Microsoft Word 2010 Using JAWS

Location: [Genesee Intermediate School District, Flint](#)

Date: [October 12–13, 2017](#)

This class will cover a variety of topics, including the Office 2010 layout and structure, file tab and backstage view, Ribbon, Access Keys, Quick Access Toolbar, editing, formatting, and more!



BrailleNote Touch Workshop

Location: [Michigan Library and Historical Center, Lansing](#)

Date: [October 19, 2017](#)

Join Peter Tucic of HumanWare for an introductory review of the BrailleNote Touch and its educational benefits for elementary, middle, and high school students. This workshop will begin with a review of navigation strategies, managing documents, and the built-in help structure. It will also include a comprehensive review of KeyWord for writing and Victor Reader for reading. Lastly, participants will explore the use of KeyMath and its benefits for writing out math expressions.

Using the Brailiant BI Refreshable Braille Display in the Classroom with the iPad and PC

Location: [Michigan Library and Historical Center, Lansing](#)

Date: [October 20, 2017](#)

Refreshable braille displays are dynamic tools used to complete academic work. In and out of the classroom they provide crisp Braille access to MS Word documents, web pages, electronic books, and more. This workshop will walk through the process of setting up the Brailiant BI with a PC and an iPad. It will also cover navigation and text entry commands for applications that are used in the classroom. Participants are encouraged to submit questions they would like addressed prior to the workshop.

Those questions may be sent to:
jim.sullivan@humanware.com



Teaching Excel 2010 Using JAWS

Location: Genesee Intermediate School District, Flint
Date: October 26-27, 2017

This class will cover how to:

- Use access keys
- Create and open workbooks
- Create, navigate, read, and modify worksheets
- Enter and edit data in a worksheet
- Save worksheets and workbooks, and more!

BrailleNote Apex Fundamentals

Location: Michigan Library and Historical Center, Lansing
Date: November 30, 2017

The BrailleNote APEX is used widely in education by students to complete academic work. Its intuitive user interface, powerful suite of applications and excellent online resources make it a dynamic product for use in the classroom. This daylong hands-on workshop will cover basic topics on KeySoft and uses of the BrailleNote in the classroom.

Creating Braille in the Classroom with the Mountbatten Learning System

Location: Michigan Library and Historical Center, Lansing
Date: December 1, 2017

In this hands-on workshop, participants will explore features of the Mountbatten Learning System students can use to write the literary braille code as well as math and music.

Participants will also learn:

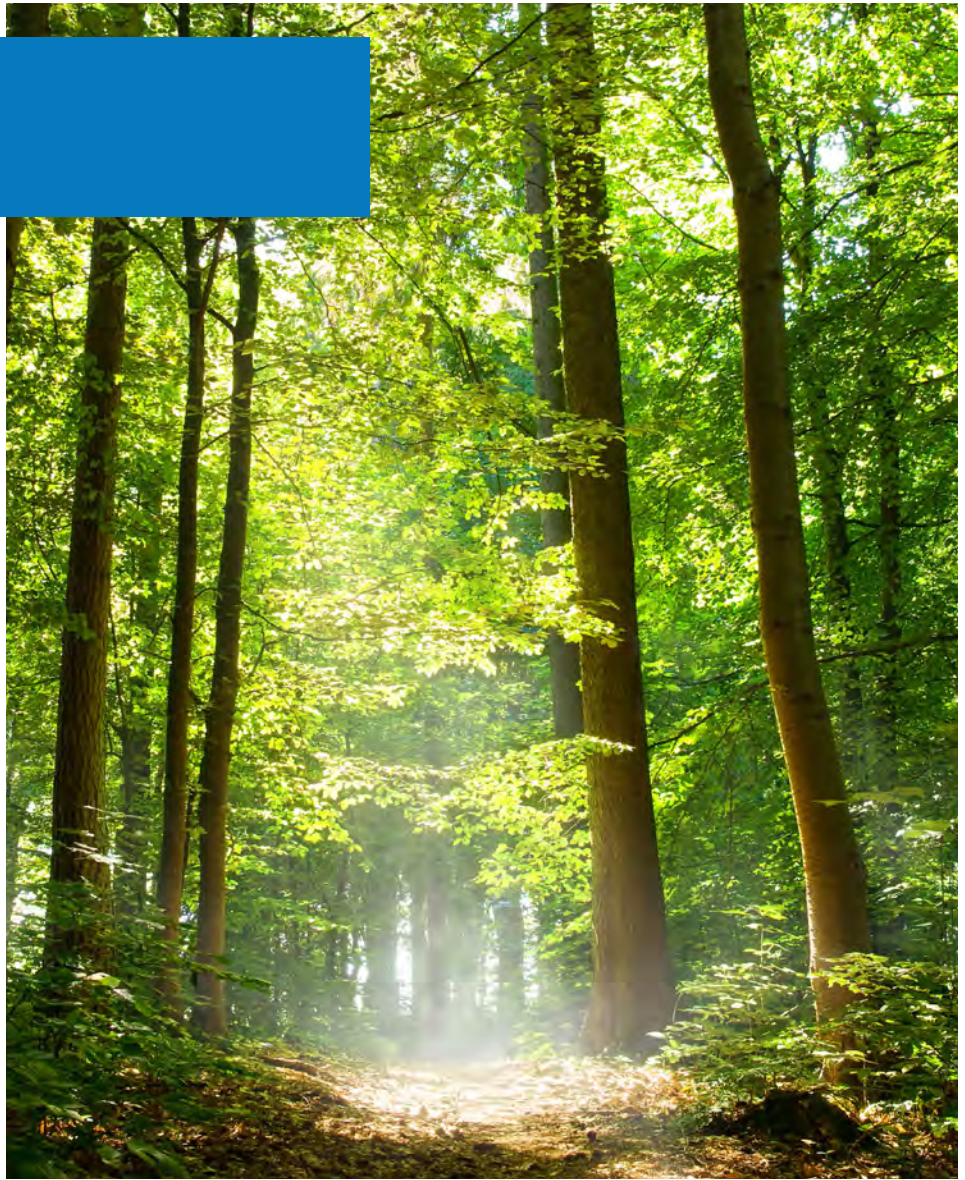
- How to use the forward translation features of the Mountbatten to create braille in the classroom.
- How the iPad and MB Mimic app can be used in the classroom to monitor student work and create braille.



Register for a workshop or learn more about upcoming events at:

www.mdelio.org/blind-visually-impaired/events

Go Green!



Save Paper

Protect the environment and go paperless whenever you can. Let us know your email address if you want to be added to our email list. Just send a request to:

msdb-outreach@michigan.gov

The Newsletter is edited by Collette Bauman, Rory Goodine, Brenda Mahoney, Kaitlin Shwago and Lynn Pensari. Comments or questions can be directed to Collette Bauman at baumanc@michigan.gov or Lynn Pensari at pensaril@michigan.gov or (888) 760-2206. This publication is available in alternate formats. Please contact us for braille, print or large print copies.

The information in this newsletter was produced and distributed through Individuals With Disabilities Education Act (IDEA) Grant Funded Initiatives for Low Incidence Outreach awarded by the Michigan Department of Education. The opinions expressed herein do not necessarily reflect the position or policy of the Michigan Department of Education, the Michigan State Board of Education, or the U.S. Department of Education, and no endorsement is inferred. The information in this newsletter is in the public domain and may be copied for further distribution when proper credit is given. For further information or inquiries about this project contact:

MDE-Low Incidence Outreach
PO Box 30742
Lansing, MI 48909
Toll Free Phone: 888-760-2206
Email: msdb-outreach@michigan.gov

Michigan Department of Education Statement of Assurance of Compliance with Federal Law

The Michigan Department of Education (MDE) complies with all Federal laws and regulations prohibiting discrimination and with all requirements and regulations of the U.S. Department of Education. It is the policy of the Michigan Department of Education that no person on the basis of race, color, religion, national origin or ancestry, age, sex, marital status, or handicap shall be discriminated against, excluded from participation in, denied the benefits of, or otherwise be subjected to discrimination in any program or activity for which it is responsible or for which it received financial assistance from the U.S. Department of Education.

For further information or inquiries about this law, contact:

The Michigan Department of Education Civil Rights Coordinator
P.O. Box 30712
Lansing, MI 48909