

Information Sharing and Updates on Public Act 256 (LEAD-K)

Wednesday, December 13, 2023

Michigan Department of Education - Low Incidence Outreach (MDE-LIO)



Low Incidence Outreach
702 W. Kalamazoo St.
Lansing, MI 48915
www.mdelio.org

Update on PA 256 (LEAD-K)



Low Incidence
Outreach

Roxanne Balfour, Director
BalfourR@michigan.gov



Introductions

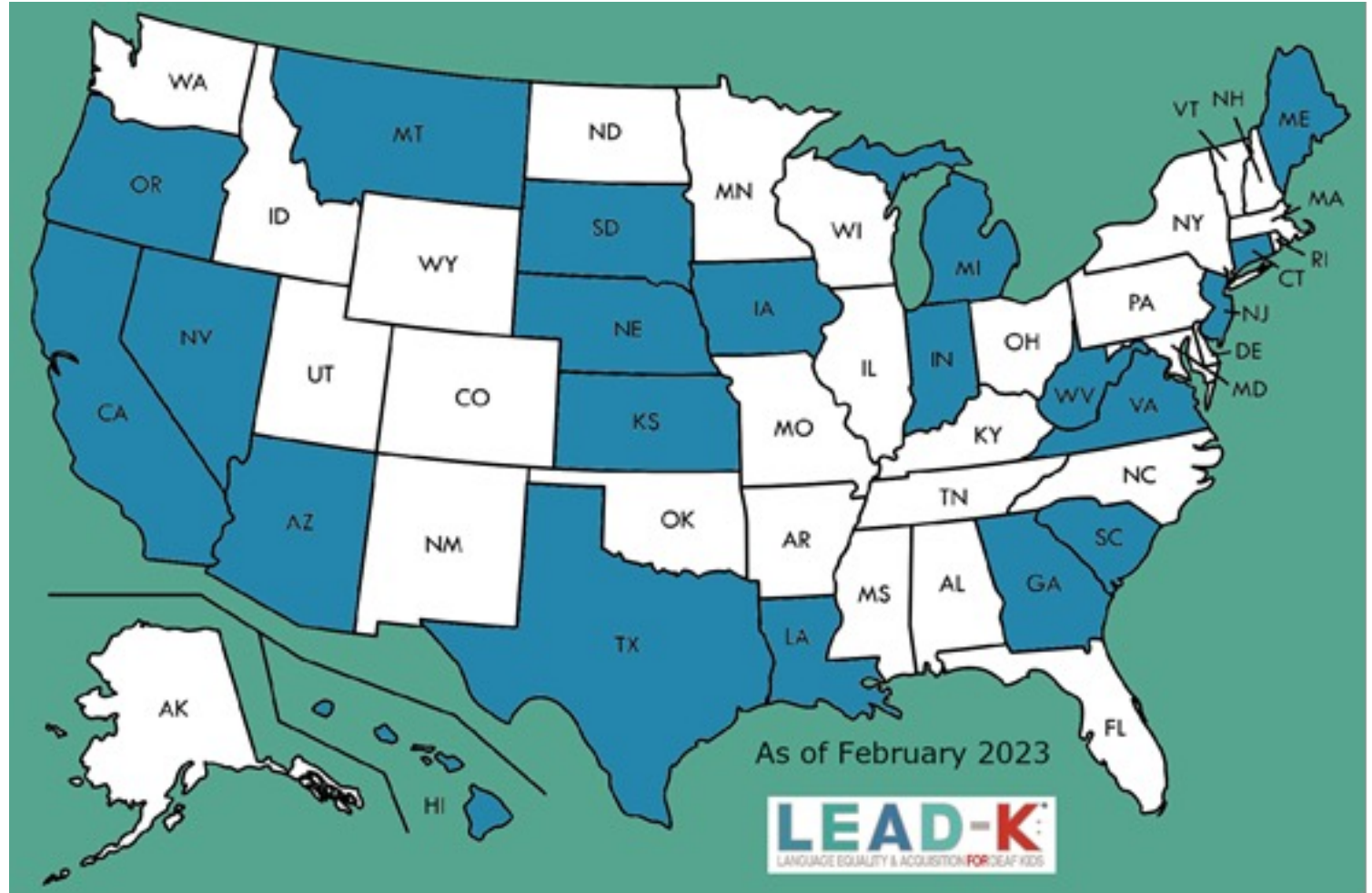
- MDE-LIO DHH Consultants
- Committee members
- Co-lead
- Facilitator
- Other individuals and organizations

What is LEAD-K?



States with LEAD-K Legislation

- Approximately 23 states have passed legislation (in blue)



Public Act 256 (LEAD-K)

Signed by Governor Whitmer in December 2022:

“By August 31, 2025, the department shall develop a resource for use by a parent or legal guardian of a child who is deaf or hard of hearing and is age 5 or younger that allows the parent or legal guardian to monitor and track the child’s expressive and receptive language acquisition and developmental stages toward English literacy.”

Timelines Established for PA 256

- On January 1, 2025 – Advisory committee established
- By May 1, 2025 – Committee recommends language development milestones
- By August 31, 2025 – Family resource developed by department
- By September 1, 2025 – School districts and ISDs implement tools and assessments adopted by department
- On December 31, 2025 – Advisory committee dissolved

Proposed Timeline for Implementing PA 256

- October/November 2023 – Fiscal agent established
- October 2023 – Finalize a list of potential advisory committee members (advocates and professionals within the field of education for students who are Deaf or Hard of Hearing (DHH) and parents of children who are DHH)
- December 2023 – Establish project coordinator and key roles

Proposed Timeline/Activities (Continued)

- December 2023 – Informational town hall meeting via Zoom
- December 2023 – Advisory committee and department meet to firm up timelines, roles, and requirements
- January – June 2024 – Regional, statewide (MI), and other states informational gathering input from stakeholders and experts
- June – December 2024 – Review and formalize information gathered; seek more input where needed

Proposed Timeline/Activities (Continued)

- January 2025 – Advisory committee makes recommendations
- February/March 2025 – Department reviews, goes back to committee if changes are needed
- April 2025 – Department works with local schools and ISDs on assessments and tools for assessing the language and literacy development of a child who is DHH and is 5 or younger

Michigan Early Childhood Planning Guide

- Data collection tool
- Predictors of academic success
 - Family Engagement
 - Receptive/ Expressive Language Milestones and Skills
 - Access to Curriculum



Michigan Communication Plan

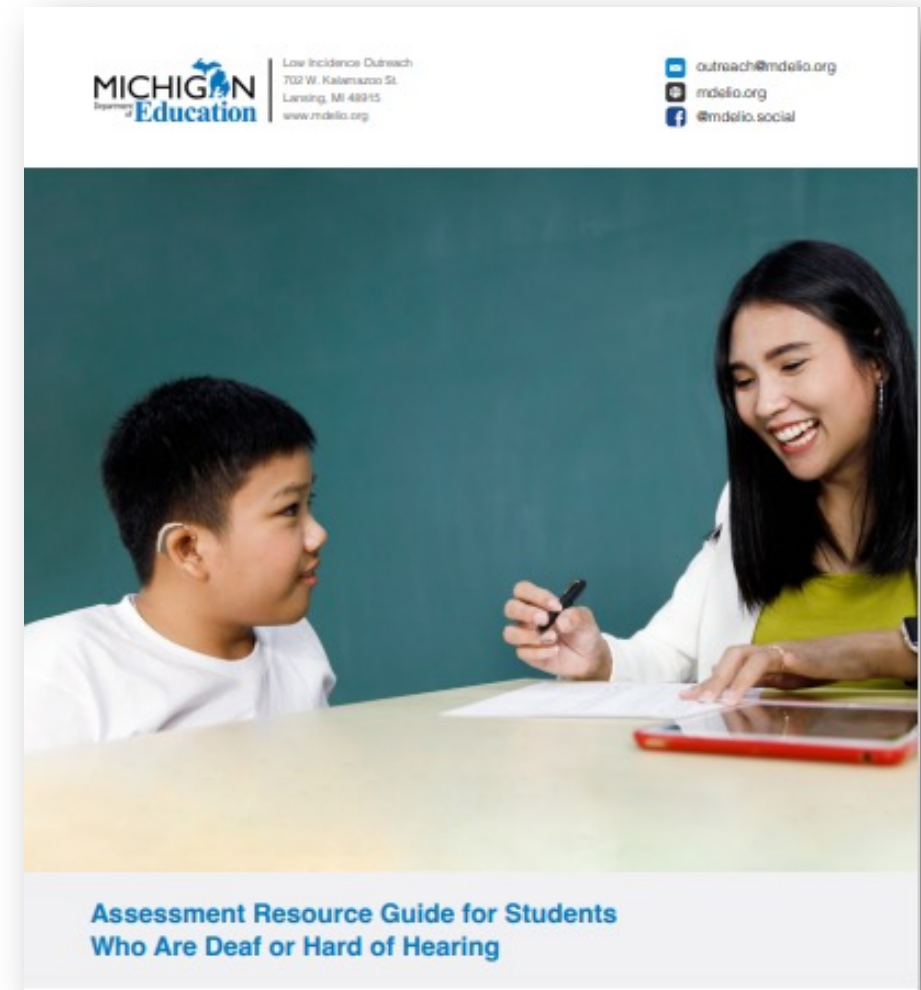
- Communication and language are the foundations for learning
- Tool for guided discussions around a student's unique needs
- Created around *Individuals with Disabilities Act* (IDEA) special factors for DHH



Michigan Communication Plan for Students Who Are Deaf or Hard of Hearing (DHH)

Assessment Resource Guide for Students Who Are DHH

1. Created as a companion to the *Educational Impact Matrix for Students Who Are DHH*
2. Serves as guide; not an exhaustive or exclusive list of assessments



Language and Vocabulary

- Expressive and receptive (spoken, signed, written, combination)
- Vocabulary
- Determining the need for AAC or developing a plan for complex communicators
- Processing/comprehension
- Social language/pragmatics
- Phonemic awareness
- And more!

Work of Collaborating Partners

- Research
- Data Sharing
- Database support
- Educational Development
- Distribution of Information

Information from MDE-LIO

[MDE-LIO website](http://mdelio.org) (mdelio.org)

[MDE-LIO email updates](http://bit.ly/LIOEmailSignup) (bit.ly/LIOEmailSignup)

[MDE-LIO Facebook page](https://facebook.com/mdelio.social) (facebook.com/mdelio.social)

DHH Staff and Contact information

Contact MDE-LIO:

Roxanne Balfour – balfourr@michigan.gov

Elizabeth Flores – florese2@michigan.gov

Kelly Dunham – dunhamk@michigan.gov

John Kirsh – kirshj@michigan.gov

Amanda Schneider – schneiderA6@michigan.gov

Questions

- MSDB-Outreach@michigan.gov